

User manual

for

‘The King Element’ M823

Version 1.40 (November 2020)

CONTENTS

1	Important information	5
1.1	Safety instructions	5
1.2	Notes on storage and cleaning.....	5
1.3	Notes on the power supply	5
1.4	Package contents.....	6
1.4.1	M823 The King Element	6
1.4.2	M826 The King, Fischer Edition.....	6
2	Getting started	6
2.1	Connecting the cables	6
2.2	Selecting the language.....	7
2.3	Switching to 'Expert' mode – preparing to play	7
2.4	Adjusting the backlight.....	8
2.5	Switching on and off.....	8
2.6	Reset	8
2.7	The buttons and their functions (summary)	8
3	Playing against the computer	9
3.1	Your move	9
3.1.1	Ordinary moves	9
3.1.2	Special moves	9
3.2	The computer's move	10
3.3	Errors	10
3.4	Symbols displayed in the bottom line (centre).....	10
3.5	Retracting and replaying moves	10
3.5.1	Retracting a move	10
3.5.2	Retracting a sequence of moves	11
3.5.3	Replaying moves.....	11
3.5.4	Continuing the game	11
3.6	Result of the game.....	11
3.7	Starting a new game	11
4	The info screens.....	12
4.1	Switching between info screens	12
4.2	Info screen: Large clock	12
4.3	Info screen: Game score	12
4.4	Info screen: Analysis.....	13
4.5	Info screen: Opening name and code	13

4.6	Info screen: Permanent brain	14
4.7	Info screen: Small clock	14
5	Special functions	15
5.1	The main menu	15
5.2	Menu: Move	15
5.3	Menu: Hint.....	15
5.4	Menu: Level	15
5.4.1	Normal levels.....	16
5.4.2	Easy levels	16
5.4.3	Fun levels	16
5.4.4	Blitz levels	16
5.4.5	Tournament levels	17
5.4.6	User level.....	17
5.4.7	'Fixed depth' levels.....	18
5.4.8	'Find mate' level	18
5.5	Menu: Nextb (Next best)	18
5.6	Menu: ⏮⏭.....	18
5.7	Menu: Save	18
5.8	Menu: Analy (Analysis).....	19
5.9	Menu: 2Play (2 Players)	19
5.10	Menu: Auto.....	19
5.11	Menu: Opts (Advanced options)	19
5.11.1	Overview of the advanced options.....	19
5.11.2	Altering an option.....	20
5.11.3	Opts: Menu	20
5.11.4	Opts: Language.....	20
5.11.5	Opts: Invert board.....	20
5.11.6	Opts: Tutor	20
5.11.7	Opts: Contrast	21
5.11.8	Options: LED brightness.....	21
5.11.9	Opts: Sound.....	21
5.11.10	Opts: Cable on right.....	21
5.11.11	Opts: Sliding	21
5.11.12	Opts: Book1	22
5.11.13	Opts: Book2.....	22
5.11.14	Opts: Permanent Brain	22
5.11.15	Opts: Randomness.....	22

5.11.16	Opts: Contempt	22
5.11.17	Opts: CPU speed	23
5.11.18	Opts: Style	23
5.12	Menu: SetUp	24
5.13	Menu: Verfy (Verify)	25
6	USB mode – Communicating with a PC.....	25
6.1	Connecting to the PC.....	25
6.2	Saving and loading games	26
6.2.1	Saving the current game	26
6.2.2	Loading a game	26
6.2.3	Loading from a PGN file	26
6.2.4	Creating a PGN file.....	27
6.2.5	Saving a game from a 'set up' position	28
6.3	Further downloads.....	28
6.3.1	Installing a new version of the chess program.....	28
6.3.2	Installing a new openings book.....	28
7	FAQ and troubleshooting.....	29
7.1	My board does not work as intended	29
7.2	A chess piece does not work as intended.....	29
7.3	I need spare chess pieces	29
7.4	Can I save games?	29
7.5	Can I load games onto the King?.....	29
7.6	Is there a firmware update?.....	29
7.7	Can I go back to older firmware?.....	29
7.8	The Update or PGN Tool does not recognize the chess computer unit.....	29
7.8.1	Driver update.....	29
7.8.2	Cable and connection	29
7.8.3	USB mode	30
7.9	The Update Tool cannot acquire the latest firmware	30
7.10	I cannot complete the firmware update	30
7.11	How long does the update take? When is the update complete?	30
7.12	Feedback and questions	30
8	Disposal	30
9	Warranty, servicing and contact with manufacturers	30
10	Technical specifications.....	31

1 Important information

This manual contains instructions for The King chess computer (software version 1.40 from Nov. 2020). The computer has two 'modes' of operation: –

- **'Comfort' mode** – for inexperienced chess players. On its lowest 'level' of playing strength in this mode, the computer can give practice to beginners or children.
- **'Expert' mode** – for strong players. In this mode the computer has a greater variety of levels and a wider range of special functions.

This manual describes 'Expert' mode only. An instruction booklet for 'Comfort' mode is supplied with the computer.

The King Element is set to play in 'Comfort' mode when you first acquire it. For how to switch to "Expert" mode, see Section 2.3 of this manual.

Before using this device, please read the following safety notes and operating instructions completely and pay careful attention to them. Please store this user manual with the device, so that you can refer to it later if needed. If you later give this device to another user, please also give them this manual.

1.1 Safety instructions

Please note that this device is not a child's toy within the meaning of Directive 2009/48/EC. If you let your children use it, instruct them accordingly and ensure that the device is used only as intended.

- Keep the packaging bags and film away from babies and small children, as there is a danger of suffocation!
- In order to avoid damage, do not expose the device to heat, e.g. from radiators or from direct sunlight, and do not expose it to any kind of moisture.
- In order to avoid malfunctions, do not operate the device on or near devices that create magnetic fields or electromagnetic radiation, such as for example televisions, loudspeakers, mobile and cordless telephones, WiFi devices etc.
- Do not open the device under any circumstances. It does not contain any serviceable parts. In the event of malfunction, contact the service address or your local shop.

1.2 Notes on storage and cleaning

- Please note that real wood needs extra care. Handle the wood carefully, always store the device where it is dry and do not expose it to strong sunlight.
- When required, only clean the device's surface with a slightly damp cloth and ensure that no moisture can penetrate into the device.
- Do not use solvents or other aggressive or abrasive cleaning agents, as these can damage the device's surfaces and lettering.

1.3 Notes on the power supply

Only operate the device with the original AC adaptor supplied with the MILLENNIUM chessboard.

Input: 100–240 V 50/60 Hz, 0.45A max

Output: 9V DC 1A

When using the AC adaptor, please observe the following:

- The power socket should be located close to the device and should be easily accessible.
- The device should not be connected to more power sources than recommended.
- The electrical contacts must not be short-circuited.

- Before cleaning the device, ensure you disconnect the adaptor from the mains.
- Regularly check the product and the AC adaptor for damage, and do not use either of them if they are damaged. Never open them up.
- Please observe any safety information printed on the AC adaptor.

1.4 Package contents

This user manual covers two different models, 'The King Element' and 'The King, Fischer Edition'. After unpacking, please check the contents for completeness and any possible signs of damage that could have occurred during transport. In the event of a complaint, please promptly contact the dealer from whom you obtained the product.

1.4.1 M823 The King Element

The package only contains the 'King Element' module.

The module itself cannot operate on its own. It operates with a MILLENNIUM Exclusive model M820. You need an M820 sensor board; the 'King Element' replaces the original clock module.

1.4.2 M826 The King, Fischer Edition

The package contains the following components:

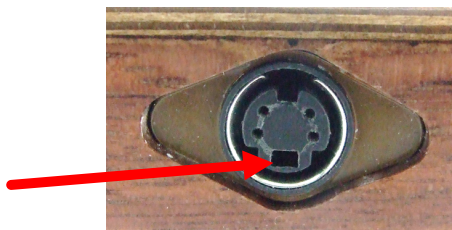
- 1 chessboard M820
- 17 white chess pieces (including an additional queen)
- 17 black chess pieces (including an additional queen)
- 1 computer unit: 'The King' (Fischer Edition) with liquid crystal display (LCD)
- 1 AC adaptor
- 1 cable with two identical connectors (to connect the computer unit to the chessboard)
- 1 instruction manual
- 1 guarantee card

2 Getting started

2.1 Connecting the cables

At the rear of the computer unit there are three sockets.

1. Take the AC adaptor (supplied with the MILLENNIUM M820 chessboard) and insert the small connector on the end of the cable into the right-hand socket at the rear of The King computer unit.
2. The cable with identical connectors at both ends (also supplied with the MILLENNIUM M820 board) is for connecting the computer unit to the chessboard. Please handle it carefully – note that each connector must be the right way up when you insert it into its socket. The connector has four narrow pins and one wider pin. Turn the connector so that the wider pin is at the bottom, to enable it to fit precisely into the openings in the socket. The wider opening in the socket is indicated by the arrow in the illustration below:



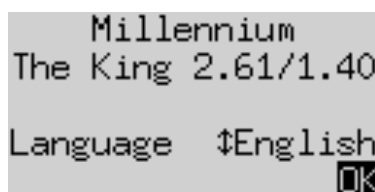
3. Plug the cable into the socket on the right-hand side of the MILLENNIUM chessboard, and also into the left socket on the rear of the computer unit.
4. Connect the AC adaptor to a power supply. A sound signal is emitted.

2.2 Selecting the language

The chess computer's LCD display can show its text in any of the following 7 languages:

Language	Shown on display
English	English
German	Deutsch
French	Français
Dutch	Nederlands
Italian	Italiano
Spanish	Español
Russian	Русский

After you connect the power and hear the sound signal, the LCD display shows the word 'English' together with the version number of the chess program:



To select the English language, confirm by pressing a GREEN button.

Or to choose a different language:

1. Press the down-arrow button ↓ as many times as needed until the language you want is displayed.
2. Then confirm with GREEN. (The language may later be changed, via the 'Options'. See Section 5.11.)

2.3 Switching to 'Expert' mode – preparing to play

Once you have selected the language, the display shows the 'Large clock' info screen:

German:



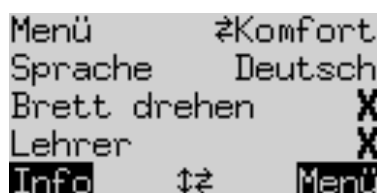
English:



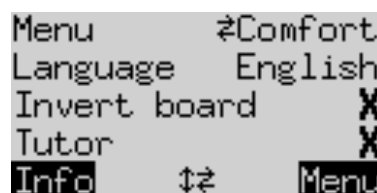
The computer is now ready to operate in 'Comfort' mode (designed for inexperienced players). To switch to 'Expert' mode, do the following: –

1. Press a GREEN button. A menu of commands appears.
2. Press the ↓ button twice, to highlight 'Options'.
3. Press GREEN again, to display the 'Options' list:

German:



English:




4. Press the right or left arrow button (⇒ or ⇐). The word 'Comfort' switches to 'Expert'.
5. Press a RED button to return to the 'Large clock' screen.

You can now prepare for a game: –


1. Place the chess pieces on their starting squares. Either White or Black can play from your end. The chessboard automatically detects where each piece is located.
2. If any pieces are not correctly placed on their squares, the red lights (LEDs) at the corners of those squares will shine. Once the position is corrected, the lights go out.
3. You can now begin a game against the computer. If you want The King to play White, give the 'Move' command as explained in Section 5.2.

The King is initially set to play on its 'Easy' level 4. The level of playing strength may be altered as described in Section 5.4.

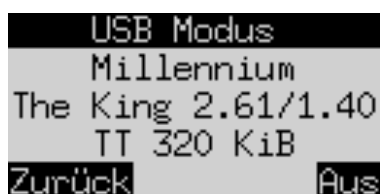
2.4 Adjusting the backlight

The LCD display has a backlight that you can adjust by pressing the  button as many times as necessary.

2.5 Switching on and off

If the computer is running and you press the On/Off button , the following display (featuring the program's version number) appears:

German:




English:



If the computer unit is connected to a PC or laptop via a USB cable, you can now perform operations such as downloading games as described in Section 6.

If instead you press a GREEN button, the device switches off.

Or if you press a RED button, it reverts to the 'info' screen or the menu (see Sections 4 and 5.1).

If switched off in the correct manner (as above), the computer will still retain the current game in its memory, even if you afterwards disconnect the power. The parameters (level, etc.) that you have specified will remain unchanged. When the power is reconnected, the computer automatically switches on. To switch on when the power has *not* been disconnected, press the  button.

After switching on, you can resume play from where you left off.

2.6 Reset

To delete previous data:

1. Disconnect the computer from the power supply.
2. Hold down a RED button and reconnect the power.
3. Keep the RED button held down until the start screen appears (as in Section 2.2).

The computer is now in the same state as when you first acquired it, *except* that any games saved as in Section 5.7 will be retained. This operation may occasionally be useful in case of a problem you don't understand.

2.7 The buttons and their functions (summary)

Either GREEN button Confirms an instruction.

Either RED button Cancels an instruction.

Note: The RED and GREEN buttons have various uses depending on the situation. Their functions at any particular moment are indicated by the ‘inverted’ wording (i.e. text on a dark background) in the bottom line of the display: RED in the left corner, GREEN in the right corner. The corner of the display is blank if the button has no function in the current situation.



Switches the computer on or off.

NEW

Starts a new game.



Adjusts the display’s backlighting.



Retracts moves.



Replays moves.



Returns to the previous screen. Moves the cursor left. Alters a parameter.



Proceeds to the next screen. Moves the cursor right. Alters a parameter.



Moves the cursor up.



Moves the cursor down.

If held down, buttons will ‘auto-repeat’.

3 Playing against the computer

3.1 Your move

3.1.1 Ordinary moves

Make your move just as you would on an ordinary chessboard. The move is acknowledged with a short buzz.

Normally the computer waits for about 0.3 seconds before registering your piece on its new square. (If you wish, this interval may be altered as in Section 5.11.11.) This means that you can carry the move out either by picking the piece up or by quickly sliding it. *If you slide the piece, it must not linger for too long (more than 0.3 seconds) on an intermediate square, or your move will be misinterpreted.*

To carry out a capture, either your own or the computer’s piece may be picked up first.

3.1.2 Special moves

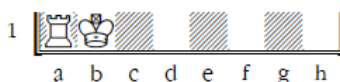
- En passant capture: The captured pawn may be removed before, during or after the move of your own pawn.
- Pawn promotion: Move the pawn to the promotion square, or simply remove it from the board. Place the queen (or other piece) on the promotion square.
- Castling: First move the king, then the rook.

In normal (i.e. ‘classical’) chess, the above procedure for castling is always recommended.

In ‘Chess960’ (see Section 3.7), an alternative method is sometimes necessary: –

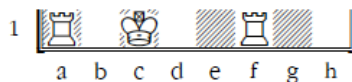
1. Pick up the king.
2. Pick up the rook with which you want to castle.
3. Place the king on its destination square.
4. Place the rook on its destination square.

This is essential when the king castles by moving just one square. For example:



To castle, pick the king up, then the rook. Then place the king on c1 and the rook on d1.

If the king or rook is already on its destination square, castling is effected by simply moving the other piece:



To castle queenside, move the rook from a1 to d1.

To castle kingside, move the king from c1 to g1.

3.2 The computer's move

To announce the computer's move, the red LEDs on the chessboard 'blink', indicating the 'from' and 'to' squares alternately. The move is also shown in notation on the 'Game score' screen (see Section 4.3).

Notice that your own clock time (see 4.2) remains 'frozen' until you have carried the computer's move out. This means that the playing conditions (especially for 'blitz' games – see section 5.4.4) are fair – you don't have to move your opponent's piece in your own thinking time.

After you move the computer's piece, it may be necessary to complete a 'special' move. The LEDs indicate the square or squares where a piece must be placed or removed. Note also the 'prompts' at the bottom left of the screen:

f8 _h8

In this example, the square h8 must be vacated and the black rook must be placed on f8 (to complete a castling move).




If the computer gives check, its move is followed by a double buzz.

3.3 Errors

If the position on the chessboard is incorrect – for example if you have knocked a piece over or tried to make an illegal move – the 'prompts' in the bottom line will indicate the square, or two of the squares, where something must be adjusted; and the red LEDs at the corners of the squares will shine.


If you need further guidance on where all the pieces should be placed, you can use the 'Verify' function – see Section 5.13. Until the position is corrected, you cannot start your next move.

3.4 Symbols displayed in the bottom line (centre)

-  (rotating hourglass): The computer is thinking about its move.
-  : You are to move with White.
-  : You are to move with Black.

3.5 Retracting and replaying moves

3.5.1 Retracting a move

If you want to take back the last move played, you may press the clockwise arrow button  . The red LEDs on the chessboard, and the prompts in the bottom line of the screen, direct you to move the piece back. For example:

_h4 g5

The white bishop must be returned from h4 to g5.

You may also simply retract the move *without* first pressing the clockwise arrow button.

3.5.2 Retracting a sequence of moves

After retracting one move, you may also retract the previous one or a longer sequence.

To do this, you can repeat the same procedure as before. However, in a long sequence it is not obligatory to take back each individual move on the board. For example, to retract the last seven moves played, you can simply press ↶ seven times, then proceed to reconstruct the position. If you need help with this, use the 'Verify' function (see Section 5.13).

3.5.3 Replaying moves

A move that you have retracted can be *replayed* by pressing the *anticlockwise* arrow button ↷ and moving the piece on the board as prompted by the lights and the screen.

To replay a sequence, you may repeat this same procedure to execute each individual move. Alternatively, you may simply press ↷ several times and then reconstruct the position at the end of the sequence.

3.5.4 Continuing the game

At any time after retracting or replaying moves, you can resume the game from the current position on the board. Carry out a move in the normal way, or give the 'Move' command (see 5.2) to make the computer play next – you will then be playing for the opposing colour.

3.6 Result of the game

The final move is accompanied by three 'beeps', and the result is announced in the bottom line of the display:

- Mate Checkmate
- Stale Stalemate
- Draw 3x Draw by threefold repetition
- Draw 50 Draw by 50-move rule
- NoMat Draw due to insufficient material (neither side can mate the opponent)
- TooLong The game cannot be continued, as it would exceed the available memory space (maximum: 256 moves for each side).

3.7 Starting a new game

You can start a new game at any time, except in the middle of some of the special operations described in Section 5.

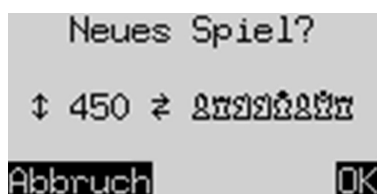
Press the NEW button. The screen shows 'New Game?' and *either* the word 'Classic' *or* an arrangement of pieces to start a game of 'Chess 960'. To switch between these displays, use ↑ or ↓.

With 'Classic' displayed, you can begin a game of ordinary ('classical') chess by pressing GREEN or simply placing all 32 pieces on their home squares. Either White or Black may play from your end.

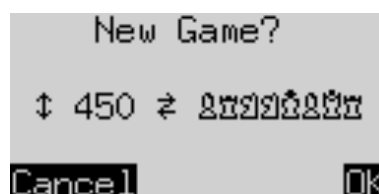
The following is an example of a starting screen for 'Chess960', also known as 'Fischer Random Chess' (an explanation of this variant of the game is supplied on the MILLENNIUM website:

<http://www.computerchess.com/>).

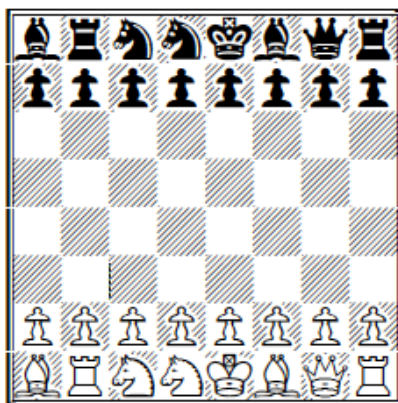
German:



English:



This invites you to begin a game from the following position, which is number 450 in the list of 960 possible starting positions for 'Fischer Random Chess':



You can change to a different number by pressing ⇐ or ⇒ as many times as required. The ↺ / ↻ buttons can be used to increase/decrease the number in steps of 50.

When the desired position number is shown, press GREEN or simply arrange the pieces on their starting squares as indicated on the LCD.

A press on a RED button would cancel the 'new game' command and leave the position unaltered.

4 The info screens

4.1 Switching between info screens

The computer (in 'Expert' mode) offers six different screens or 'pages' on which information is displayed: 'Large clock', 'Game score', 'Analysis', 'Opening name and code', 'Permanent brain' and 'Small clock'. You can switch between the screens by using the ⇐ and ⇒ buttons.

From any 'info' screen, you may press GREEN to access the menu of special functions. See Section 5.1.

Repeated presses on the right arrow button ⇒ will display the screens in the following order: –

4.2 Info screen: Large clock

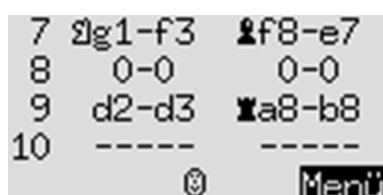
This screen was displayed when you first connected the power and selected the language – see illustration in Section 2.4.

On a 'Normal', 'Easy', 'Fun' or 'Fixed depth' level (as well as the 'Find mate' level), this screen shows the total times taken so far by White and Black. On a 'Blitz', 'Tournament' or 'User' level, the clock display 'counts down' and shows the amount of time remaining until the next time control. (See Section 5.4 for descriptions of the levels and how to select them.)

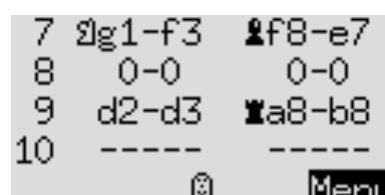
4.3 Info screen: Game score

This screen shows the most recent moves, for example:

German:



English:



You may press the up arrow ↑ or down arrow ↓ buttons to switch directly between the 'Large clock' and 'Game score' screens.

Moves that have been retracted (see 3.5.1) are indicated as follows:

```
13 a4-a5 >>---
```

In this example, Black's 13th move has been retracted.

4.4 Info screen: Analysis

This screen provides you with insights into the computer's thought process.

For example, the top three lines may show:

```
07/33 f2-f4 01109
+0.39 00:26 808254
Qb5 Qxb5 cxb5 Nd8
```

The current 'search depth' is indicated by the figure at the top right: the computer is looking 9 'ply' ahead. (One 'ply' is a single move by White or Black.) The adjacent figure '01' indicates that a 'full width search' (or 'brute force') is being employed for the first 'ply' only. (See the explanation of 'full width search' in 4.6; also 'Selectivity' in 5.11.18.)

In this example, there are 33 legal moves in the position. The one being considered is f2–f4, the 7th move that the computer has analysed to the current depth.

In the current state of its analysis, the move that the computer rates as best is Qb5. It considers that after this move, the best continuation for both sides is: Qxb5; cxb5 Nd8 (the sequence may be continued in the fourth line).

The number +0.39 is the computer's evaluation of the position: The King believes it has a slight advantage, worth 0.39 of a pawn. Further examples of what may appear in this place on the screen are:

–1.89	The computer has a disadvantage nearly equivalent to 2 pawns.
Book2	Consulting its 'books' of standard chess openings, the computer has located the current position in the book designated as No. 2. See Sections 5.11.12 and 5.11.13.
+M 7	The computer can force checkmate in 7 more moves.
–M 4	The opponent can force checkmate in 4 more moves.

In the middle of the second line, the computer records the amount of time it took to reach its current conclusions about the best move, the continuation and the evaluation. Note the use of the colon and semicolon:

02:26	2 minutes 26 seconds
01;08	1 hour 8 minutes

The number of positions examined before reaching the current conclusions is shown at the right of the second line – in this case 808,254. (Sometimes 'k' for 'thousand' or 'M' for 'million' will be seen.)

4.5 Info screen: Opening name and code

The top 2 lines of the LCD indicate the opening of the current game; you will see the name together with the 'code' assigned to the variation in the *Encyclopedia of Chess Openings* (ECO). For example:

German:

```
D85 Grünfeld-
Indisch: Abtausch
e2e4 c1d2 g2g3
c3a4 -g1f3 -d1b3
5. 0 Menü
```

English:

```
D85 Grünfeld:
Exchange Variation
e2e4 c1d2 g2g3
c3a4 -g1f3 -d1b3
5. 0 Menu
```

Note: The opening names cannot be displayed in languages other than English and German.

In the above example, the 3rd and 4th lines indicate 'book' moves available in the current position – i.e. the moves recognized by the 'openings book' that the computer is using (see Sections 5.11.12 and 5.11.13).

If a move is preceded by '-', The King will not play it; the openings book merely equips the computer with a response to this move.

If no book moves are available, the third and fourth lines will give info that supplements the 'Analysis' screen. The info relates to the analysis that The King has *completed* to a certain depth. For example:

German:

```
C02 Französisch:
Vorstoßvariante
00:22 1048k 08|10
Pos/Sek 46571
39. 0 Menü
```

English:

```
C02 French:
Advance Variation
00:22 1048k 08|10
pos/sec 46571
39. 0 Menu
```

The greatest 'depth' to which the analysis has been completed is 10 'ply'. To perform this analysis, The King took 22 seconds, examining about 1,048,000 positions at a rate of 46571 positions per second. The 'full width search' (see 4.6) was conducted to a depth of 8 ply.

4.6 Info screen: Permanent brain

When the 'Permanent Brain' is active (see 5.11.14), the computer continues to think about the position when it is your turn – it analyses the consequences of what it considers your best move.

The info it displays is similar in format to the 'Analysis' screen; for example, the top three lines may show:

German:

```
PR g1-e2 05|10
-0.56 03:32 6244k
♙e7 d4 ♙g4 dxc5
```

English:

```
PB g1-e2 05|10
-0.56 03:32 6244k
♙e7 d4 ♙g4 dxc5
```

In this example, The King expects you to play Ng1–e2, and anticipates the continuation Be7; d4 Bg4; dxc5.... The computer considers it has a disadvantage worth 0.56 of a pawn. To reach these conclusions, it examined approximately 6,244,000 positions in 3 minutes 32 seconds.

The computer is currently looking 10 'ply' ahead. The figure 05 in the top line shows that the first 5 'ply' are subject to a 'full width search' (i.e. examination of every legal move and every legal response...).

4.7 Info screen: Small clock

This screen shows various items of information relating to time.

For example, on a 'Tournament' or 'User' level (see 5.4 for explanation), the first 4 lines may show:

```
□ 0:32:26 / 10
0:27:34 01:38
■ 0:28:21 / 11
0:31:39 00:06
```

It is Black to play. White spent 1 minute 38 seconds on the last move, and a total of 27 minutes 34 seconds on all moves played so far.

To reach the next time control, White must make 10 moves within 32 minutes 26 seconds. (There is no such data on 'Normal', 'Fun', 'Fixed depth' and 'Find mate' levels, where the system of timing is different.)

The third and fourth lines of the screen give the corresponding information for Black, including the time spent so far on the current move (6 seconds).

5 Special functions

5.1 The main menu

If you press GREEN when any of the 'info' screens is shown (see Section 4), a menu of special functions appears. In 'Expert' mode the menu contains 12 items:



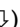

German:

```
Zug  Tipp  Stufe
Alter  <<<>>>  Sich.
Analy  2Spie Auto
Funkt  Stell Kontr
Info   &#x2191;&#x2193; Eingabe
```

English:

```
Move  Hint  Level
NextB <<<>>>  Save
Analy  2Play Auto
Opts  SetUp Verfy
Info   &#x2191;&#x2193; Enter
```


One character on the display is highlighted by a 'blinking' sign: . This is the *cursor*.

By using the arrow buttons (   ) , you can move the cursor around.

In order to select a function, move the cursor to it and press GREEN.

If instead you press RED, this returns you from the menu to the 'info' screen.

Note: When operating the special functions, remember that the uses of the RED and GREEN buttons are always indicated by the 'inverted' wording at the left and right of the bottom line.

Also notice the signs in the *middle* of the line. Here, the  signs tell you that all four 'direction' buttons are currently enabled for performing menu operations.

5.2 Menu: Move

If you select this item when it is your turn to move, the computer will compute and play the next move itself, and you can then take over the other colour.

If you want The King to play White, select 'Move' to begin the game.

If you select 'Move' when it is the computer's turn, it will cut short its calculations and play immediately.

5.3 Menu: Hint

Select 'Hint' if you want the computer to suggest a move for you. For about 2 seconds the move is indicated by the LEDs on the chessboard and also appears in notation at the bottom left of the screen, e.g.:

German:

```
T:&#x2656c3
```

English:

```
H:&#x2656c3
```

You can now decide whether to follow the advice or play another move instead.

5.4 Menu: Level

In 'Expert' mode the computer's levels of playing strength fall into 8 categories: 'Normal', 'Easy', 'Fun', 'Blitz', 'Tournament', 'User', 'Fixed depth' and 'Find mate'.

When you select 'Level' from the menu, the current level is displayed. Initially the computer is set to play on 'Easy' level 4.

- To alter the level category: Press ↑ or ↓ as many times as necessary until the desired category is shown.
- To alter the level number within the category: press ⇐ or ⇒ as many times as necessary. (*The 'User' category is a special case, in which you have to specify a range of parameters.*)
- When the desired level is displayed, press GREEN to select it and return to the 'info' screen. (Instead, a press on RED would return to the menu while leaving the level unchanged.)

5.4.1 Normal levels

On these levels, the computer takes a certain average amount of time per move – ranging from 1 second on Normal level 0, to 3 minutes on Normal level 9. (The average is measured over a 10-move sequence.)

5.4.2 Easy levels

In this category of 9 levels, the computer plays at reduced strength, to give practice to inexperienced opponents. It cuts short its calculations after examining a certain number of positions. The screen shows the computer's estimated playing strength in terms of international (Elo) rating points. (The 'Easy' levels are the same as the 9 'Elo levels' in 'Comfort' mode.)

German:

```

$Einfach 20
Elo 1000
125...500
Pos./Zug
Abbruch ↑⇐ OK

```

English:

```

$Easy 20
Elo 1000
125...500
pos./move
Cancel ↑⇐ OK

```

The strength of play on the weakest 'Easy' level (see illustration) corresponds to an Elo rating of about 1000.

Normally, on this level, the computer examines up to 125 positions per move. In an endgame situation the quantity may increase to 500. On 'Easy' level 8, the figures are 32000 and 128000 respectively.

One way to make the game even easier is to switch off the opening books (see Sections 5.11.12 and 5.11.13) – while increasing the Randomness (see 5.11.15) to ensure variety.

On the 'Easy' levels, the "Permanent Brain" is never active even if it has been switched 'on'. See Section 5.11.14).

5.4.3 Fun levels

On these levels also, the computer examines a restricted number of positions per move. In addition, it deliberately plays some moves it considers inferior. From 'Fun 0' to 'Fun 5', the seriousness of the errors decreases.

Like the 'Easy' levels, the 'Fun' levels don't use the 'Permanent Brain' (see 5.11.14) even when it is 'on'.

On the 'Fun' levels, the 'Tutor' (see Section 5.11.6) is also inactive because The King cannot properly assess the position.

5.4.4 Blitz levels

These levels simulate a game of 'bullet', 'blitz' or 'rapid' chess: the computer and the user have to play all their moves within a specific amount of time. The allotted time ranges from 2 minutes on Blitz level 0, to 1 hour on Blitz level 8. If a player exceeds the time limit, the 'clock' screens show the following:

```

-- : -- : --

```

However, the game may be continued even after the player has 'lost on time'.

5.4.5 Tournament levels

The tournament levels offer various 'Fischer', 'sudden death' or 'classical' time controls. Just as in games on the 'Blitz' levels, play may continue even if one player loses by overstepping the time limit.

'Fischer' timings:

Tournament 0	At the start of the game, each player is given 5 minutes' thinking time. After each move played, the clock time is incremented by 3 seconds.
Tournament 1	25 minutes at the beginning, then an additional 10 seconds per move.
Tournament 2	1 hour at the beginning, then an additional 30 seconds per move.

'Sudden death' finish:

Tournament 3	Each player must make the first 30 moves within 1 hour, and then receives 30 minutes to complete the game.
Tournament 4	The first 40 moves within two hours, and then 30 minutes to complete the game.

'Classical' time control:

Tournament 5	Each player must make 40 moves in the first two hours, and 20 moves per hour thereafter.
--------------	--

5.4.6 User level

In this category, you can specify your own customized time control.

Example: You want to give the players 1 hour and 30 minutes for their first 42 moves, and 15 minutes for every 7 moves thereafter – with an increment of 15 seconds per move.

The display for the 'User' category looks like this:

German:

```
⚡Benutzer ⚡Bearb.  
20 in 1:00:00  
Alle in 1:00:00  
Inkrement 00:00  
Abbruch ⚡ OK
```

English:

```
⚡User ⚡Edit  
20 in 1:00:00  
All in 1:00:00  
Increment 00:00  
Cancel ⚡ OK
```

If you repeatedly press \Rightarrow or \Leftarrow , the cursor (the 'blinking' █) moves around the screen to visit six items in turn: the five parameters in rows 2–4, and the level category ('User') in the top row.

1. Bring the cursor to the left-hand parameter in the second row. This is the number of moves for the first time control.
2. Press GREEN. The cursor (█) is replaced by the sign ⚡. You can now alter the parameter by using the direction buttons. The \Leftarrow/\Rightarrow arrows increase/reduce the number by one. The \Uparrow/\Downarrow arrows increase/reduce it by ten. The maximum value for the parameter is 'All' (this comes after 60).
3. Once you have reached 42, press GREEN to confirm.
4. The █ reappears in place of ⚡, and shifts to the second parameter in the same row. This is the period (in h:mm:ss) for the first time control.
5. Press GREEN. The █ is replaced by ⚡, and you can alter the parameter. The \Leftarrow/\Rightarrow arrows increase/reduce the period in steps of one minute. The \Uparrow/\Downarrow arrows increase/reduce the period in steps of ten minutes.
6. Once you have reached 1:30:00, press GREEN to confirm. The ⚡ is replaced by █, which moves to the third row.

7. The parameters in the third row are the moves and the period for the second and subsequent time controls. Change the figures to 7 and 0:15:00, in the same way as you changed the figures in the second row (steps 2–6). When the new values are confirmed, the cursor moves down again.
8. The fourth row contains the increment (in *mm:ss*). Press GREEN. The \leftarrow/\rightarrow arrows increase/reduce the increment by one second. The \uparrow/\downarrow arrows increase/reduce it by ten seconds.
9. When you have changed the increment to 00:15 and confirmed it with GREEN, the display shows the following:

German:

```
Benutzer  Bearb.
42   in  1:30:00
7    in  0:15:00
Inkrement  00:15
Abbruch  ↑↓      OK
```

English:

```
User  Edit
42   in  1:30:00
7    in  0:15:00
Increment  00:15
Cancel  ↑↓      OK
```

To confirm that you have finished setting your 'User' level, press GREEN again to return to the info screen.

If instead you want to readjust any particular parameter, bring the cursor to it and carry out the alteration as explained above. Then bring the cursor to the top line, and press GREEN for final confirmation.

5.4.7 'Fixed depth' levels

On these levels the computer always analyses to the same depth, regardless of the amount of time this requires. Any depth in the range 1–38 'ply' may be selected.

5.4.8 'Find mate' level

On this level, the computer searches for the quickest way to force checkmate from the current position. If it fails to find a forced mate in 37 'ply' or less, it displays 'No mate found' on the 'Analysis' info screen (see Section 4.4).

Note that on this level, the 'Analysis' screen gives no evaluation of the position.

5.5 Menu: Nextb (Next best)

If you select this item, the computer will discard its last move and compute and play the one it rates as second best. The display (bottom line) and the lights will guide you in retracting the old move and carrying out the new one.

If you like, the operation may be repeated to produce the third and fourth best moves ... etc.

5.6 Menu: ⏮⏭

Selecting ⏮⏭ takes you to the start of the game score – it has the effect of 'taking back' all the moves at once (see Section 3.5).

Then when you are back at the start, ⏮⏭ has the effect of *replaying* all the moves at once, i.e. restoring the position at the end of the game score (see Section 3.5.3).

By using ⏮⏭ and the ↶ button, you may replay the moves one by one, to review the entire game.

5.7 Menu: Save

The computer's memory contains 9 'slots' in which games can be saved (stored). A saved game can later be loaded (retrieved), so that you can continue it or play through the moves (using ↶), etc.

To use this feature, select 'Save' from the menu. The screen shows something like this:

German:

```
Spiel 123456789
Laden  ✓✓-----
Sichern  ↓↓↓↓↓↓↓↓↓↓
Züge 38
Abbruch ⚡ Laden
```

English:

```
Game 123456789
Load  ✓✓-----
Save  ↓↓↓↓↓↓↓↓↓↓
Moves 38
Cancel ⚡ Load
```

The 'blinking' cursor (■) can be moved right/left and from one line to the other by means of the 'direction' buttons (⇐⇒⇑⇓).

In the above example, slots 1-3 are occupied, while 4-9 are vacant. The game in slot number 1 is 38 moves long.

To save the current game: place the cursor on the 'Save' line, bring it to the slot where you want the game to be saved, and press a GREEN button. This will erase any game that was stored in the slot previously.

To load a game: place the cursor on the 'load' line, bring it to the desired slot and press GREEN.


To clear an occupied slot: 'save' to this slot when the current game is still in the starting position with no moves played.

To return to the menu without any saving or loading, press RED.

Games may also be saved to your PC or laptop, and loaded from there. For this, see Section 6.


5.8 Menu: Analy (Analysis)

If this item is selected, the computer will not make any moves of its own but will merely analyse the current position. You can play moves for both White and Black and inspect the information on the 'Analysis' screen (see Section 4.4).

To show that The King is in 'Analysis' mode, the  symbol is displayed expanding and contracting. The computer exits from this mode if you re-select the 'Analy' item or give the 'Move' command.

5.9 Menu: 2Play (2 Players)

In 'Two Player' mode, the computer performs no analysis. This allows you to use its special chessboard for a game between two humans. The computer merely checks the legality of the moves, records the score of the game, and performs the functions of a chess clock.

A pair of 'faces' in the bottom line of the screen () shows that The King is in '2Play' mode. It exits from this mode if you re-select the '2Play' item or give the 'Move' command.

5.10 Menu: Auto

The 'Auto' command instructs the computer to play against itself. Each time you carry out a move, The King automatically starts computing the next move for the other side.

The computer exits from 'Auto' mode if you re-select the 'Auto' item, retract a move or start a new game.

5.11 Menu: Opts (Advanced options)

5.11.1 Overview of the advanced options

The 'options' are a set of 16 special features that you have the possibility to modify. To inspect them, select 'Opts' from the menu. This displays four options from the list, e.g.:

German:

```
Menü      ðExpert
Sprache    Deutsch
Brett drehen  X
Lehrer      X
Info       ðz Menü
```

English:

```
Menu       ðExpert
Language    English
Invert board  X
Tutor        X
Info        ðz Menu
```

One line of the screen incorporates the cursor (the 'blinking' ■). By repeatedly pressing ↑ or ↓, you can move the cursor up and down and view all 16 options in rotation.

5.11.2 Altering an option

To alter an option, bring the cursor to the relevant row and use the ⇐ / ⇒ buttons.

Example: You want to switch the 'Tutor' feature 'on' and set the 'Sliding' parameter to 'Fast'.

Bring the cursor to the 'Tutor' line. For this feature, there is a simple choice between 'off' (X) and 'on' (✓). Press ⇐ or ⇒ to switch from one to the other.

Next, press ↓ five times to display the 'Sliding' line and place the cursor there. This parameter (described in 5.11.11) has three 'settings', i.e. 'Slow', 'Medium' and 'Fast' – which you can display in rotation with ⇐ or ⇒.

When 'Fast' is displayed (finishing your alterations to the options), press GREEN to return to the menu or RED to return to the info page.

We now consider the options in turn. *Note: Under the 'Style' option, the possibilities are more complex than in the other cases. See Section 5.11.18.*

5.11.3 Opts: Menu

If this option is switched to 'Comfort', The King will operate in 'Comfort' mode with a simplified menu of commands. This is described in a separate instruction booklet.

5.11.4 Opts: Language

There is a choice of 7 different languages for the screen messages; see 2.2.

5.11.5 Opts: Invert board

If White is playing 'up the board', the corresponding line on the Options screen shows:

German:

```
Brett drehen  X
```

English:

```
Invert board  X
```

If instead you want Black to play 'up', change the 'X' to '✓' and rearrange the pieces accordingly. The 'Verfy' function (see 5.13) can help you with this.

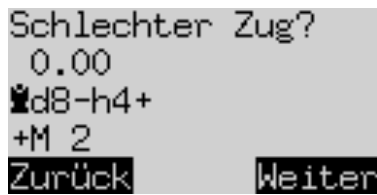
However, this operation is unnecessary at the start of a game. The computer automatically detects whether the black or white pieces have been arranged at your end, i.e. whether the board is 'inverted' or not.

5.11.6 Opts: Tutor

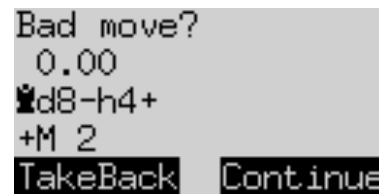
Switch the Tutor function 'on' if you want the computer to point out your errors.

If the tutor is 'on' (✓) and the computer thinks you have made a weak move, the display shows a warning. For example:

German:

A monochrome LCD screen showing chess-related information. The text is as follows:
Schlechter Zug?
0.00
♖d8-h4+
+M 2
Zurück Weiter

English:

A monochrome LCD screen showing chess-related information. The text is as follows:
Bad move?
0.00
♖d8-h4+
+M 2
TakeBack Continue

The screen shows:

- the computer's assessment of the position before your move (compare Section 4.4);
- its own possible reply;
- its assessment of the position following that reply.

In this example, the position was previously rated as equal, but The King can now deliver checkmate in two moves.

You may now press RED (or ↶) and take your move back, as indicated by the lights. Or if you want your move to stand, press GREEN (or ↷).

5.11.7 Opts: Contrast

You have the choice of 10 different contrast settings for the LCD display.

5.11.8 Options: LED brightness

The brightness of the red LEDs has settings from 0 (dimpest) to 9 (brightest).

5.11.9 Opts: Sound

There are six possible volume settings for the sound signals, labelled "Off" and 1–5.

5.11.10 Opts: Cable on right

Normally the computer assumes that as you look at the chessboard, the cable between the board and the computer unit is at the right-hand side. If you want to rotate the board physically so that the cable is plugged in on your left, you can switch this option from '✓' to 'X'.

Then 'Invert board X' (see 5.11.5) will still mean that White is playing away from your end.

5.11.11 Opts: Sliding

As explained in Section 3.1.1, you may adjust the computer's reaction time, i.e. the interval before it registers your piece on its new square. If the interval is longer, you may slide the piece across the board a little more slowly.

The 'Sliding' option offers 3 settings which may be selected as in Section 5.11.2:

Fast	Virtually instantaneous reaction
Medium	Reaction time: approximately 0.3 seconds
Slow	Reaction time: approximately 0.6 seconds

If the 'Fast' setting is chosen, a move across more than one square should be made by picking the piece up, not sliding it.

5.11.12 Opts: Book1

The computer is equipped with 9 'books' (or 'libraries') of standard chess openings. Two of the books are comprehensive in scope:

- 'Master' Book by M.Uniacke, containing over 300,000 positions
- 'Aegon 1994' Book by C. de Gorter, with 61,000 moves; it contains many forgotten and 'dubious' lines.

There are also seven specialized books, each dealing with a specific area of chess opening theory:

- Open Games (1. e4 e5, without Spanish)
- Spanish (or Ruy Lopez)
- Semi-Open (1. e4 without 1...e5 or 1...c5)
- Sicilian
- Q. Gambit
- Indian
- Gambits

By setting the 'Book1' parameter, you specify which book the computer will use as the first choice for determining its opening moves. In addition to the 9 settings listed above, there are 2 others:

- User The book, if any, that you have installed via a USB connection – see Section 6.3.2.
- Off If this is chosen, the computer will only consult 'Book2' – see 5.11.13.

Note: Because the opening books for The King must maintain a certain format, please register your device with us, so that we can keep you supplied with all relevant information.

5.11.13 Opts: Book2

This parameter specifies the openings book of second choice: if 'Book1' supplies no move in the current position, The King will if possible play a move from 'Book2'.

If either of the books is set to 'Off', only the other book will be used. If 'Book1' and 'Book2' are *both* 'Off', The King will compute its moves independently right from the start of the game.

5.11.14 Opts: Permanent Brain

If the computer's 'Permanent Brain' is switched 'on', it continues calculating when it is your turn to move (see Section 4.6). One way to lower the computer's playing strength and give yourself an easier game is to switch this function 'off' (X).

Note: On the 'Easy' and 'Fun' levels (see 5.4.2 and 5.4.3), the computer operates *without* its 'Permanent Brain' even if this option is selected. In that case, if you switch to a level category *other* than 'Easy' or 'Fun', The King will revert to thinking in its opponent's time.

5.11.15 Opts: Randomness

This option introduces a small element of randomness into the computer's assessment of the moves that are immediately available in the current position.

The random element can be increased on a scale from 0.00 to 0.50. A high value can be helpful if (e.g.) the openings 'books' are set to 'Off' (see 5.11.12 and 5.11.13): the random element will increase the variety of moves that the computer can play in the opening stage.

5.11.16 Opts: Contempt

This parameter has a scale of values from -2.00 to +2.00. By increasing the value, you increase the program's aversion (i.e. 'contempt') for a drawn result. If the value is negative, The King will show more readiness to go into a drawn or drawish position.

5.11.17 Opts: CPU speed

Reducing the computer's speed of calculation is one way to make it an easier opponent. The 'CPU speed' option offers 30 settings, ranging from 10 to 300 MHz.

5.11.18 Opts: Style

To determine The King's style of play, there are five predefined 'settings' to choose from: Defensive, Solid, Normal, Active and Aggressive.

In addition, there are three 'User' settings. These are styles that you can create according to your own specifications.

Inspecting the styles

Each style is defined by the significance it attaches to the following 10 components of the position: –

Pawn	Space
Knight	Mobil (= Mobility)
Bishop	Ksafe (= King safety)
Rook	PassP (= Passed Pawn)
Queen	Pweak (= Pawn weakness)

The style is also influenced by a 'Selectivity' factor. A high value for this parameter (maximum: 20) permits the program to analyse certain selected variations more deeply. A value of 1 results in 'brute force', i.e. every variation analysed to the same depth.

To inspect (e.g.) the composition of the 'Aggressive' style: –

1. Use ⇐ or ⇒ to display the 'Aggressive' setting.
2. Press GREEN. The 'blinking' cursor (█) appears.
3. Repeated presses on ↑ or ↓ bring the cursor to each line in turn and allow all the components to be displayed. The last 4 lines look like this:

German:

```
50% KSichr 200%
128% Freib. 63%
63% BStruk 63%
Auto Selektivität
Zurück ↑↓
```

English:

```
50% KSafe 200%
128% PassP 63%
63% PWeak 63%
Auto Selectivity
Back ↑↓
```

In each line, the percentage on the left is the value ascribed to this component in the computer's own position. The value of the same component in the opponent's position is indicated on the right. In each case, the 'normal' value would be 100%, but notice how the 'Aggressive' style attaches great significance to the opposing king's safety factor – meaning that the computer will be especially eager to attack the king. On the other hand, the low score on the left of the same line means the computer will be prepared to take certain risks with its own king's defence.

In the 'Selectivity' line, 'Auto' means that this factor will be adjusted automatically as the game progresses. The value is likely to be 20 in the early stages but will decline towards 1 as the endgame approaches.

When you have finished the inspection, a press on RED returns you to the Options list.

Defining a 'User' style

Example: You want the 'User1' style to give the bishop a slightly higher value than usual in relation to the other pieces. And you want 'User1' to take special care to keep its queen on the board.

1. Use ⇐ or ⇒ to display the 'User1' setting, and press GREEN.
2. The cursor (■) can be moved from line to line with ↑/↓ and from left to right with ⇐/⇒.
3. Bring the cursor to the left-hand percentage in the 'Bishop' line.
4. Press GREEN. The cursor is replaced by a ⚡ sign.
5. The percentage can now be altered in steps of 1 by ⇐/⇒ or in steps of 10 by ↑/↓.
6. Change the percentage to 110 and press GREEN to confirm. The cursor (■) reappears.
7. Move the cursor to the right and change the right-hand percentage as in steps 4-6.
8. Using the same procedure, change the left-hand percentage in the 'Queen' line to 120.

The screen now displays the following:

German:

```

100% Spring 100%
110% Läufer 110%
100% Turm 100%
120% Dame 100%
Zurück ⚡ Eingabe

```

English:

```

100% Knight 100%
110% Bishop 110%
100% Rook 100%
120% Queen 100%
Back ⚡ Enter

```

Press RED to return to the Options list, and RED again to resume play. Now as long as the current style is 'User1', the computer will (e.g.) be more reluctant than usual to exchange bishop for knight and more keen to exchange knight for bishop. It will also be more reluctant to part with its queen, even for a nominal material equivalent. Since its own queen is now priced more highly than the opponent's, it will tend to avoid a queen exchange.

5.12 Menu: SetUp

To construct a special position on the computer's chessboard, select 'SetUp' from the menu. The screen then shows 6 items of data. One of them is accompanied by the 'blinking' cursor – just as on the menu screen. Repeated presses on ↑ or ↓ bring the cursor to each item in turn.

German:

```

* 001 Zug Nummer
✓ Weiß am Zug
h1 ♖0-0 a1 ♖0-0-0
h8 ♜0-0 a8 ♜0-0-0
Abbruch ⚡ OK

```

English:

```

* 001 Move number
✓ White to move
h1 ♖0-0 a1 ♖0-0-0
h8 ♜0-0 a8 ♜0-0-0
Cancel ⚡ OK

```

Simply place the pieces on the desired squares of the chessboard. You may also want to alter the properties of the position, as follows.

To change the colour to move:

- Bring the cursor to the 'White to move' line.
- Press ⇐ or ⇒ to switch between ✓ (White) and X (Black).

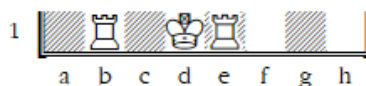
To specify the move number:

- Bring the cursor to the 'Move number' line, and press GREEN. (The * is replaced by ⚡.)
- The left arrow ⇐ or right arrow ⇒ increases/decreases the number in steps of one. The up arrow ↑ or down arrow ↓ increases/decreases the number in steps of ten.
- When ready, press GREEN to confirm. (The * reappears.)

To specify whether (for example) Black has the right to castle queenside (with the rook on a8):

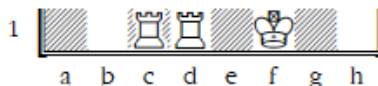
- Bring the cursor to the right-hand item in the fourth row.
- Press ⇐ or ⇒ to switch between 'a8' (yes) and '--' (no).

For castling to be enabled, the king and rook don't have to be on their home squares for 'classical' chess. Castling may take place under the rules for 'Chess960'; for example:



You may stipulate that both 0-0 and 0-0-0 are possible.

But in a (very rare) position like the following, you can only enable castling with the 'outer' rook (in this case c1):



When the pieces are in place and any changes to the properties are complete, press GREEN to confirm the new position. (Instead, a press on RED would return to the situation before you selected 'SetUp'.)

You can now play from this position; make a move or give the 'Move' command to make The King do so (see 5.2).

Note (1): You cannot confirm the new position if it contains any of the following faults:

- A king is missing. This is indicated in the bottom line by: ♔♚??
- A pawn is on the 1st or 8th rank – indicated by (e.g.) ♖c1
- There are too many pieces of the same type/colour – indicated by (e.g.) ♖>8
- The side to move is giving check – indicated by ♖x♔ or ♚x♚

Note (2): The first move from the position you have constructed cannot be a capture *en passant*. To create a position where such a move is possible, set up the immediately preceding position, then carry out the move that allows the capture.

5.13 Menu: Verfy (Verify)

The 'Verify' function displays half the chessboard in diagrammatic form, with the pieces in the correct current positions. To switch between the two halves of the board, press ↑ or ↓.

This function can help you adjust the pieces on the chessboard in case of confusion. To return to the 'info' screen, press RED.

6 USB mode – Communicating with a PC

6.1 Connecting to the PC

If you wish to use the functions described below, please register with MILLENNIUM 2000 (<http://www.computerchess.com/>) so that we can inform you of changes and/or software upgrades relating to your computer.


To connect the computer unit to a PC or laptop, you will need an A to B USB cable (not included in the delivery). This is the type that is used (e.g.) for printers. Plug the cable into the centre socket at the rear of the computer unit and into a suitable port on your PC/laptop.

You can then:

- Install an updated chess program in your chess computer.
- Install a new openings book (see 5.11.12).
- Import and export games in 'PGN' (Portable Game Notation) format.

6.2 Saving and loading games

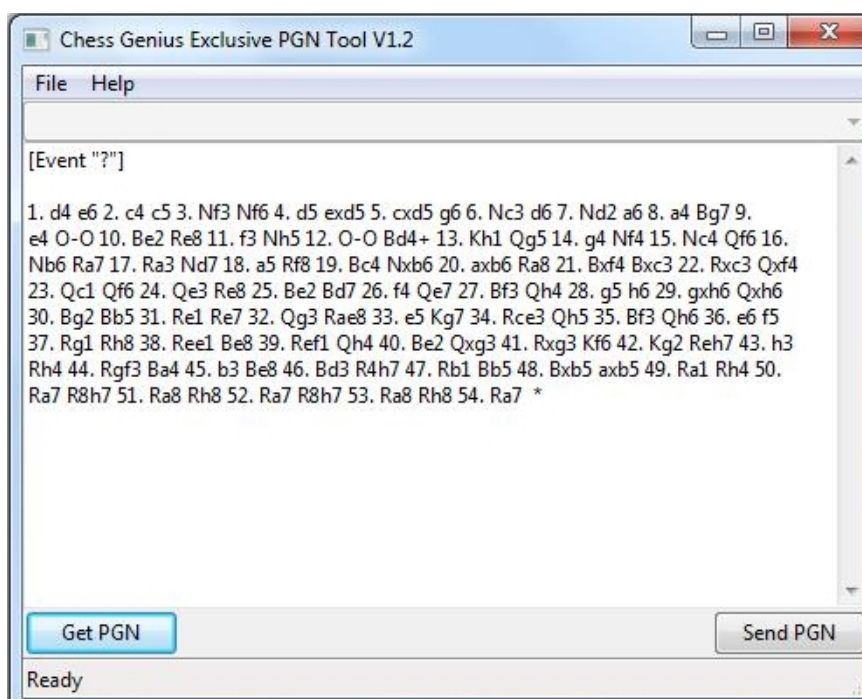
These operations are performed with the 'PGN Tool' application that can be obtained from the Millennium website (<http://www.computerchess.com/>). Download it to your PC or laptop, and also download and run its Installer program. Then:

- Open the PGN Tool.
- Press the  button on the chess computer unit, to display 'USB Mode'.

A game can now be saved or loaded.

6.2.1 Saving the current game

Click on 'Get PGN' at the bottom left of the PGN Tool display. The current game that The King has been playing appears in the application window. For example:



You can now copy and paste the game into a document or text file.

Note the 'Event' header. This or another suitable header must precede the game score if the game is to be incorporated in a composite PGN file.

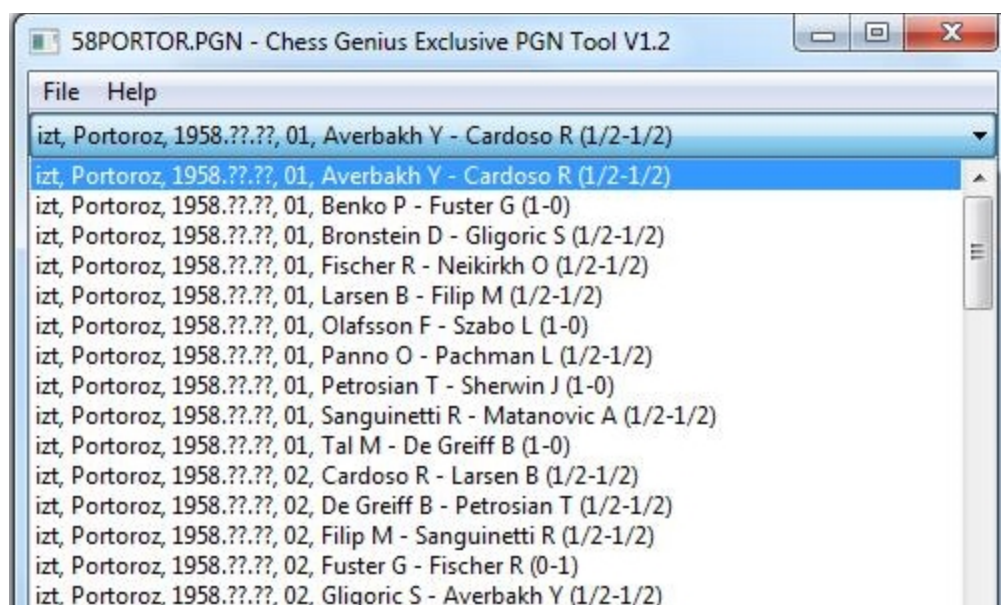
6.2.2 Loading a game

You can simply copy a game into the PGN Tool window, then click on 'Send PGN'. The downloaded game is now the 'current' one (replacing the game, if any, that was in progress). The 'Game score' screen (see Section 4.3) will display the final moves. You can step back and forward through the moves as described in Section 3.5.

6.2.3 Loading from a PGN file

A game from a composite file in PGN format can be selected and downloaded as follows:

1. Click on 'File' at the top left of the PGN Tool display. Then click on 'Load PGN File'. This displays a box enabling you to navigate to the required file.
2. Highlight the file and click on 'Open'. One of the games in the file appears in the application window.
3. Click on ▼ at the top right. This displays a drop-down menu of games in the file, e.g.:



4. Select a game, and click on 'Send PGN' to download it to The King.

6.2.4 Creating a PGN file

A file where multiple games can be stored and handled as in Section 6.2.3 can be created as follows:

1. Open a blank document or text file.
2. Save the file in Plain Text (*.txt) format.
3. Change the 'txt' suffix to 'pgn'.

Each game copied into the PGN file must be preceded by one or more 'headers'. A header is enclosed in square brackets and consists of a label followed by a string in double quotation marks.

The PGN tool requires each game to have at least *one* header with any of these three labels:

- Event
- White
- Black

A template for the 'Event' header is automatically supplied by the PGN Tool when a game is acquired from The King. The string in quotation marks can be edited in the PGN Tool window, e.g.:

[Event "25-minute Rapid game"]

Then when the game is stored in the PGN file, the drop-down menu will display the string as an identification for this game:

25-minute Rapid game, ??? - ??? 0

The fields denoted here by '???' and '0' are available to be filled by data from headers labelled 'White', 'Black' and 'Result'. Other standard headers that can supply data for the drop-down menu are 'Site', 'Date' and 'Round'. For example, you could equip a game with this set of headers:

[Event "Rapid chess match"]
 [Site "Hastings, England"]
 [Date "2018.07.17"]
 [Round "2"]
 [White "User"]
 [Black "The King"]
 [Result "1/2-1/2"]

Then the menu would identify the game like this:

Rapid chess match, Hastings, England, 2018.07.17, 2, User - The King (1/2-1/2)

Note: To ensure correct formatting (with quotation marks in the requisite style), the game data is more conveniently edited in the PGN Tool window than in the PGN file itself.

6.2.5 Saving a game from a 'set up' position

If a game acquired from The King begins from a 'set up' position (see Section 5.12), the PGN Tool records that position in 'Forsyth-Edwards notation'. For example:

[Event "?"]

[SetUp "1"]

[FEN "1k1K4/1p5P/1P6/8/8/8/p7/8 w - - 0 1"]


1. h8=Q a1=Q 2. Qg8 Qa2 3. Qe8 Qa4 4. Qe5+ Ka8 5. Qh8 Qf4 6. Ke7+ Qb8 7. Qa1+ Qa7 8. Qxa7+ *

(If the PGN file is only to be used in conjunction with the PGN Tool, it is unnecessary to preserve the header labelled 'SetUp'. This header may be required if the file is to be read by other applications.)

6.3 Further downloads


With the King Element update tool, obtainable in the section "Downloads" from the Millennium website (<http://www.computerchess.com/>), it is possible to load updated versions of the chess program into the chess computer unit. New openings books may also be loaded (see 5.11.12). To install the Update Tool on your PC or laptop, follow the on-screen instructions.

6.3.1 Installing a new version of the chess program

1. With the PC/laptop connected to the Internet, open the Update Tool.
2. Press the  button on the computer unit, to display 'USB Mode'.
3. Click on 'Connect' in the Update Tool window.
4. Click on ▼ in the 'Available Firmware' line of the Update Tool. From the drop-down menu, select the desired version of the chess program.
5. Click on 'Send-> Clock'. While the program is being installed, the message 'Programming' is shown in the Update Tool display and on The King's LCD screen. The process is likely to take several minutes.

Note: Installing a new program has the effect of 'resetting' the computer (see 2.6). The game in progress, and any parameters you have specified ('User' level, 'User' style, choice of openings book, etc.), will not be retained.

6.3.2 Installing a new openings book

Open the Update Tool, press the  button and click on 'Connect' – just as in Section 6.3.1. Then click on ▼ in the 'Available books' line, select the desired book from the drop-down menu, and click on 'Send-> Clock'.

7 FAQ and troubleshooting

7.1 My board does not work as intended

A lot of work goes into The King, and we do our utmost to get the best product to you. Sometimes the board does not work as intended – for example, when it gets damaged during transport. This should not happen. For help and/or a replacement, please contact the shop where you purchased the board.

7.2 A chess piece does not work as intended

This should not happen. Please contact the shop where you purchased the board for help and/or a replacement.

7.3 I need spare chess pieces

We included a spare queen for pawn promotion. If you want other additional pieces, or a spare set, you can contact the shop where you purchased the board. Most shops sell spare sets.

7.4 Can I save games?

Games can be stored in The King's memory as described in Section 5.7. You can also save a game as a PGN file on your PC/laptop. For this purpose, the PC/laptop needs to have the PGN Tool installed; see Sections 6.2 and 6.2.1.

7.5 Can I load games onto the King?

A game in PGN format can be loaded to The King by means of the PGN Tool; see 6.2.2 and 6.2.3.

7.6 Is there a firmware update?

We release firmware updates. These updates remove bugs and add additional features. We suggest you use the latest firmware for best playing experience.

You can either check if there is a newer firmware version available by using the Update Tool (see 6.3), or you can subscribe to our newsletter on our website: <http://www.computerchess.com/>.

If you have subscribed, you will receive an email once there is an update available.

7.7 Can I go back to older firmware?

Some users want to have the option of playing with an older firmware version. If we release an update that changes the engine, we put both versions (the old and the new one) on our server. You can update The King to the new one – and if you want the older one back, you just need to use the Update Tool again; select the older firmware and give the command 'Send-> Clock'. There can only be one firmware version installed on your chess computer unit – not two different ones at the same time.

7.8 The Update or PGN Tool does not recognize the chess computer unit

7.8.1 Driver update

You might need to update a driver on your computer. Check for driver updates online.

7.8.2 Cable and connection

Check that you have the right cable. It must be connected to your computer, as well as to The King. See Section 6.1.

7.8.3 USB mode

If The King is not in 'USB Mode', the Update or PGN Tool will not recognize it. Press the  button on the chess computer unit to display 'USB Mode' – see Sections 2.5 and 6 for more details.

7.9 The Update Tool cannot acquire the latest firmware

To download the firmware, your computer needs to access the Internet. Check if you have Internet access. Check also if you might have blocked the Update Tool – for example, access might be denied by your firewall.

7.10 I cannot complete the firmware update

Is the chessboard connected to the chess computer unit? Some firmware versions may require the board to be connected during download and update.

7.11 How long does the update take? When is the update complete?

Depending on your Internet speed, it might take several minutes for the Update Tool to download the firmware from our server. Please just wait patiently until the download is complete. Once the Update Tool displays 'Programming Complete' in the bottom line, you can click on 'Restart' at the top right. If you do not click on 'Restart' for several minutes, The King will restart itself. Once restart is complete, the clock shows the usual start screen (see 2.2).

In total, this may take up to 20 minutes. Make yourself a cup of tea or coffee. It does not help if you press any buttons or click repeatedly on the Tool – really. We can tell you from experience.

7.12 Feedback and questions

We are always happy to receive your feedback, and we are curious to receive your questions. Email us at quality@computerchess.com.

8 Disposal



Dispose of packing materials in an environmentally friendly manner by using the relevant collection containers provided for the purpose.



Within the European Union, the device must be disposed of properly at the end of its service life, according to EC Directive 2012/19/EU. Suitable parts of the device will then be recycled, reducing environmental pollution. For more information, please contact your local waste disposal company or your municipal administration.

9 Warranty, servicing and contact with manufacturers

For Germany/Austria/Switzerland:

Please contact our office in Germany, either by telephone +49 (0) 2773 7441 222 or at support@computerchess.com.

If you purchased the product in a country other than Germany, Austria or Switzerland, and need service, please contact the shop where you purchased the product.

For any questions or feedback, you can also email us at quality@computerchess.com.

10 Technical specifications

PRODUCT:	Millennium King Element / Fischer Edition
ITEM NO:	M823 / M824
HARDWARE:	ARM Cortex M7 CPU configurable from 10–300 MHz
SOFTWARE:	Chess Program © Johan de Koning (NL) Version 1.40 (November 2020)
OPENING BOOKS:	‘Master’ book by M.Uniacke © Applied Computer Concepts Ltd (UK) – approx. 300,000 positions ‘Aegon 1994’ book © C. de Gorter (NL) – approx. 61,000 positions

NOTE: This product is not protected against the effects of electrostatic charges, strong electromagnetic radiation or other electrical interference, as malfunctioning as a result of these conditions is not critical.

Modification of specifications (especially in respect of technical advances) reserved and errors excepted.

This user manual was carefully compiled, and its contents carefully checked for accuracy. If, despite all expectation, these instructions nevertheless contain errors, this shall not constitute grounds for any claims. This user manual, including excerpts thereof, may not be reproduced without prior written permission.

Product development by

MILLENNIUM 2000 GmbH
Heisenbergbogen 1
85609 Aschheim, Germany
www.computerchess.com

Copyright © 2020, MILLENNIUM 2000 GmbH, Aschheim, Germany.